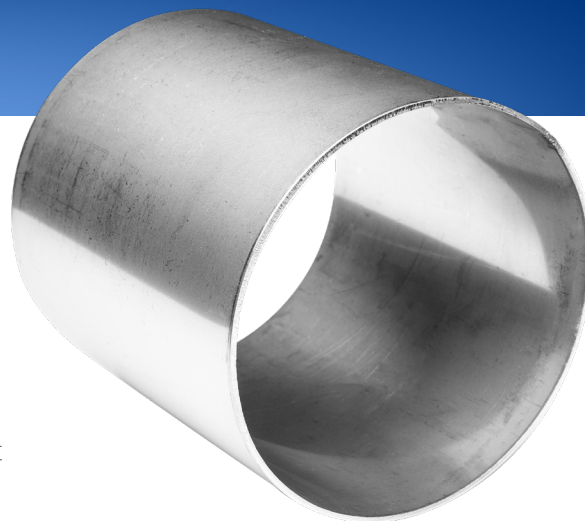


## CRUSH SLEEVE



The Crush Sleeve is a stainless steel ring designed to be fitted within fiberglass exhaust connection tubes to provide extra strength for tight clamping applications. Crush Sleeves are fabricated to mate to Centek VernaTube™ tubing and may not be compatible with other brands.

1. Clean and sand the inside of the tubing to a depth of 4" (102mm)
2. Apply 3M™ 5200 Fast Cure to the inside of the tubing and to the outside of the Crush Sleeve.
3. Insert Crush Sleeve into tubing such that the ends are flush. Wipe off excess adhesive.
4. Install exhaust hose and hose clamps. Follow hose clamp manufacturer recommendations for clamp torquing.
5. Allow adhesive to cure 24 hours before starting engine.

**Please call our support line if we may assist you in any way. (229) 228-7653**



WARNING – These are GUIDELINES ONLY and are NO GUARANTEE of a properly designed and installed exhaust system. Centek's products are used in a variety of systems and applications. Therefore, it is impossible for Centek to provide specific installation instructions for all possible configurations of exhaust systems that may be incorporated on a marine vessel by the vessel manufacturer.

IT IS THE RESPONSIBILITY OF THE BOAT MANUFACTURER TO PROPERLY DESIGN AND INSTALL AN EXHAUST SYSTEM APPROPRIATE FOR THE VESSEL IT MANUFACTURES.



Unless otherwise specified, Centek warrants its products for a period of five years from the date of original sale. This limited warranty is in lieu of all other expressed or implied warranties such as warranty of merchantability or fitness for a particular use or the results or effects of such use. ***Centek's liability is limited to the replacement or repair of the Products, and such liability will not exceed the original purchase price.*** A full copy of all the terms and conditions of Centek's warranty is available online at [www.centekmarine.com/warranty](http://www.centekmarine.com/warranty) or will be furnished upon request.