

3.50" X 3.50" Verna-Ski 4.34" X 40.00"



Part # 1000266

The Vernatone™ family of wet exhaust mufflers is available in a wide range of sizes and configurations to suit your specific needs. Recognized by boat builders around the world as the best choice for gas or diesel engines. Above waterline only.

Vernatone™ FAMILY

MATERIALS AND CONSTRUCTION

Process	Filament Winding CNC, Resin Transfer Molding
Resin	Class 1 Fire Retardant Epoxy Vinyl Ester Thermoset
Glass	Corrosion-Resistant E Glass
Glass / Resin Ratio	60%

ATTRIBUTES

A In/Out (IN / MM)	3.50 / 89
C - Length (IN / MM)	40.00 / 1,016
D - Diameter (IN / MM)	4.38 / 111
Inlet Offset	Straight
Color	Standard Black; White, Gel-Coat, Yacht Quality, Yacht Quality Plus Available
Approvals	Lloyd's Register Type Approval
Flame Retardancy	UL94V-0

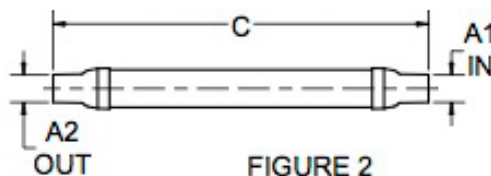


FIGURE 2

